

*Oxfordshire*



# **Eynsham**

## **Settlement profile**

### **of**

## **Health and Wellbeing evidence**

**November 2020**

## CONTENTS

1	Summary.....	3
2	Geographical boundaries .....	5
3	Population profile .....	9
3.1	Population by age.....	9
3.2	Ethnicity .....	10
3.3	People living in Communal Establishments .....	11
4	Deprivation and Children in poverty .....	12
4.1	Indices of Deprivation 2019 .....	12
4.2	Child poverty.....	14
5	Health and wellbeing.....	15
5.1	Health profiles for Eynsham & Cassington ward.....	15
5.2	Provision of care.....	16
5.3	Health conditions .....	17
6	Physical activity and healthy weight.....	19
6.1	Physical activity .....	19
6.2	Child obesity .....	20
7	House prices and commuting data.....	22
	ANNEX 1: Indicator dates.....	24
	ANNEX 2: Data sources used in this report.....	26

V2: Document revised 1<sup>st</sup> June 2021 to correct errors in the data of table 3 (section 5.3) showing change in rates from 2018-2019 to 2019-2020

This report provides health and wellbeing evidence from the Oxfordshire Joint Strategic Needs Assessment (JSNA) for Eynsham.

Reports and related information for the full Oxfordshire Joint Strategic Needs Assessment is available on the Oxfordshire Insight website at <http://insight.oxfordshire.gov.uk/cms/joint-strategic-needs-assessment>

# 1 Summary

## Population

- The total resident population of Eynsham has seen little change over the past 10 years and, as of mid-2019, the ONS estimates that Eynsham (parish<sup>1</sup>) was home to 5,042 people.
- Eynsham has a relatively old population, with a higher proportion of people aged 65 and over than the district and county average.
- A relatively low proportion of Eynsham's population is from an ethnic minority background.

## Deprivation and children in poverty

- According to the English Indices of Deprivation 2019, Eynsham is relatively un-deprived. Most areas are within the 20% least deprived nationally with the exception of one Lower Super Output Area (West Oxfordshire 011C) which falls within the 50% most deprived areas nationally.
- According to End Child Poverty 2019 estimates, Eynsham and Cassington ward had around 18% of children living in poverty (after housing costs).

## Health and wellbeing

- Health indicators from Public Health England for Eynsham and Cassington ward were all similar to or better than the England average.
- GP practice data for Eynsham Medical Centre, for selected health conditions, shows a high rate of recorded dementia:
  - The prevalence of recorded **diabetes** was significantly lower than the England rate.
  - The prevalence of recorded **dementia** was double the county and nearly double the national averages.
  - The prevalence of recorded **depression** was below the Oxfordshire average and over the England average.
- The latest data on child obesity from the National Child Measurement Programme shows that:
  - for reception children (aged 4-5 years), the Eynsham area was similar to the district, county and national averages.

<sup>1</sup> "parish" refers to the geographical parish boundary, see section 2.

- For year 6 children (aged 10-11 years) the area including east Eynsham and Hanborough area was significantly below (better than) the national average.

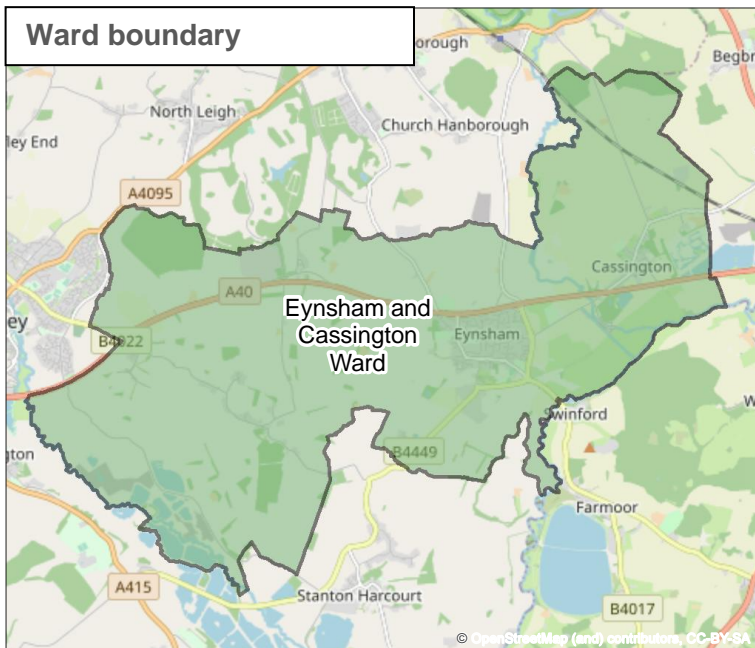
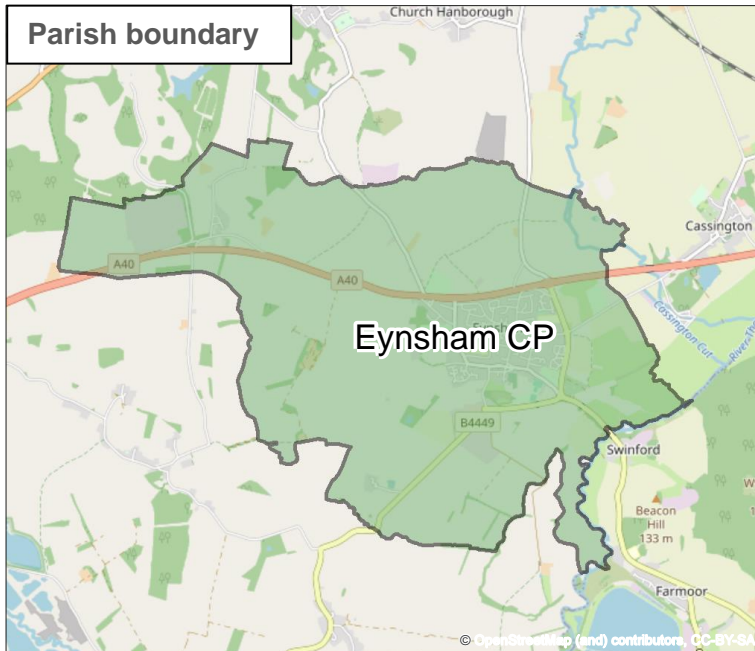
## House prices and commuting

- Over the past 5 years (year ending December 2014 to year ending December 2019), median prices for semi-detached houses in Eynsham and Cassington ward increased at well above the rate of West Oxfordshire district (+39% compared with +28%).
- According to the 2011 Census, 19% of commuters living in Eynsham travelled to work within the town. The other top work destination was Oxford (29%) followed by Witney (13%).

## 2 Geographical boundaries

Data in this profile is reported using several types of geographical boundaries – administrative and statistical.

The following maps show Eynsham parish boundary and the boundary for Eynsham and Cassington ward including Eynsham, Cassington, South Leigh and Worton.



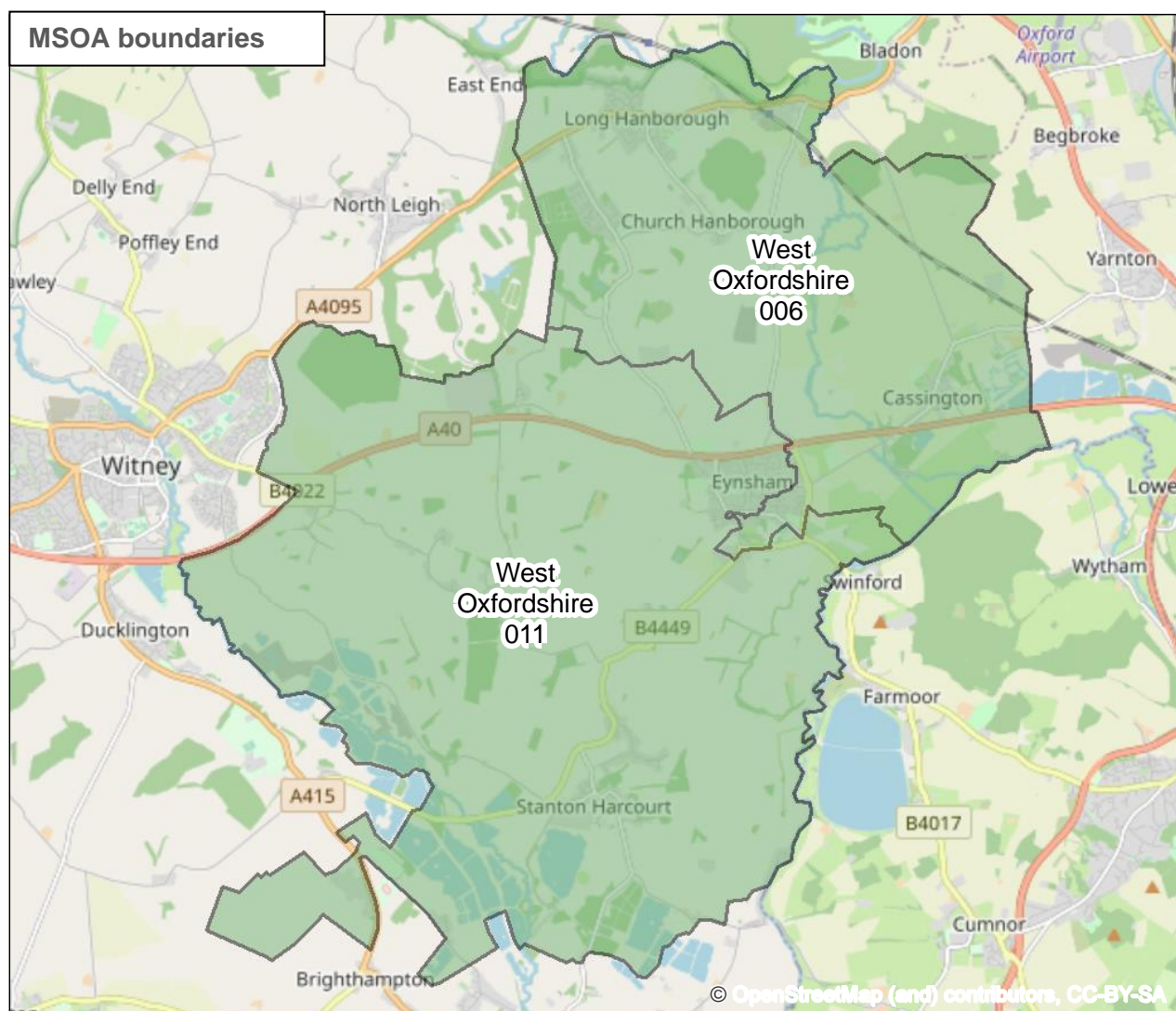
Maps by Oxfordshire County Council

Wards surrounding Eynsham are: Botley & Sunningwell ward, Cumnor ward, Ducklington ward, Freeland & Hanborough ward, Hanley, Minster Lovell & Leafield ward, Kidlington West ward, North Leigh ward, Standlake, Aston & Stanton Harcourt ward, Witney East ward, Witney South ward and Woodstock & Bladon ward.

In addition to these administrative boundaries, National Statistics for small areas are reported using the statistical hierarchy developed by the Office for National Statistics.

**Middle Super Output Areas (MSOAs)** are used by ONS to publish Census travel to work data and an increasing range of other social and demographic statistics.

There are two MSOAs covering Eynsham: West Oxfordshire 011 covering most of Eynsham and West Oxfordshire 006 covering a small part of the south of the town.



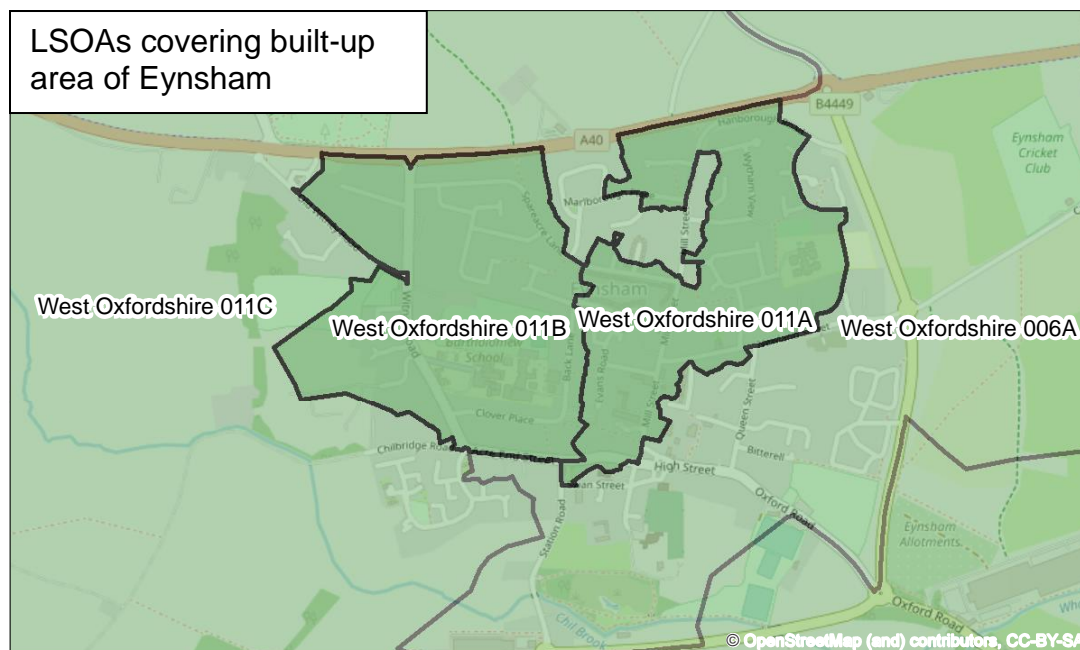
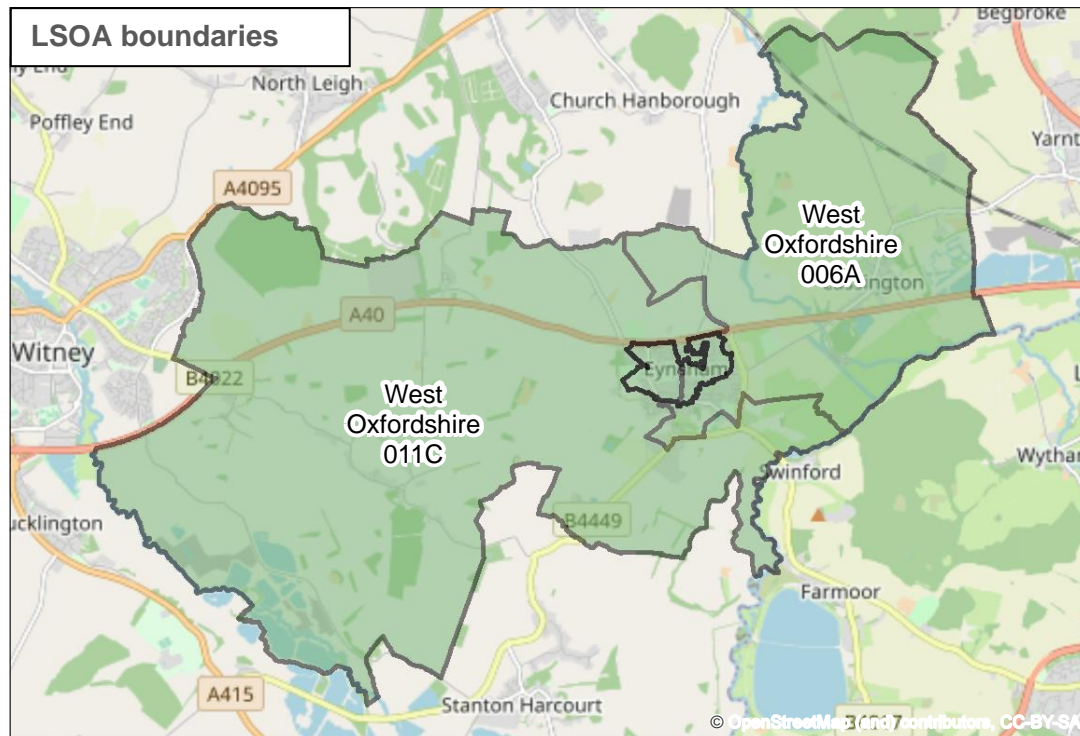
Maps by Oxfordshire County Council



**Lower Super Output Areas (LSOAs)** are used as the geography for publishing the national Indices of Deprivation (IMD).

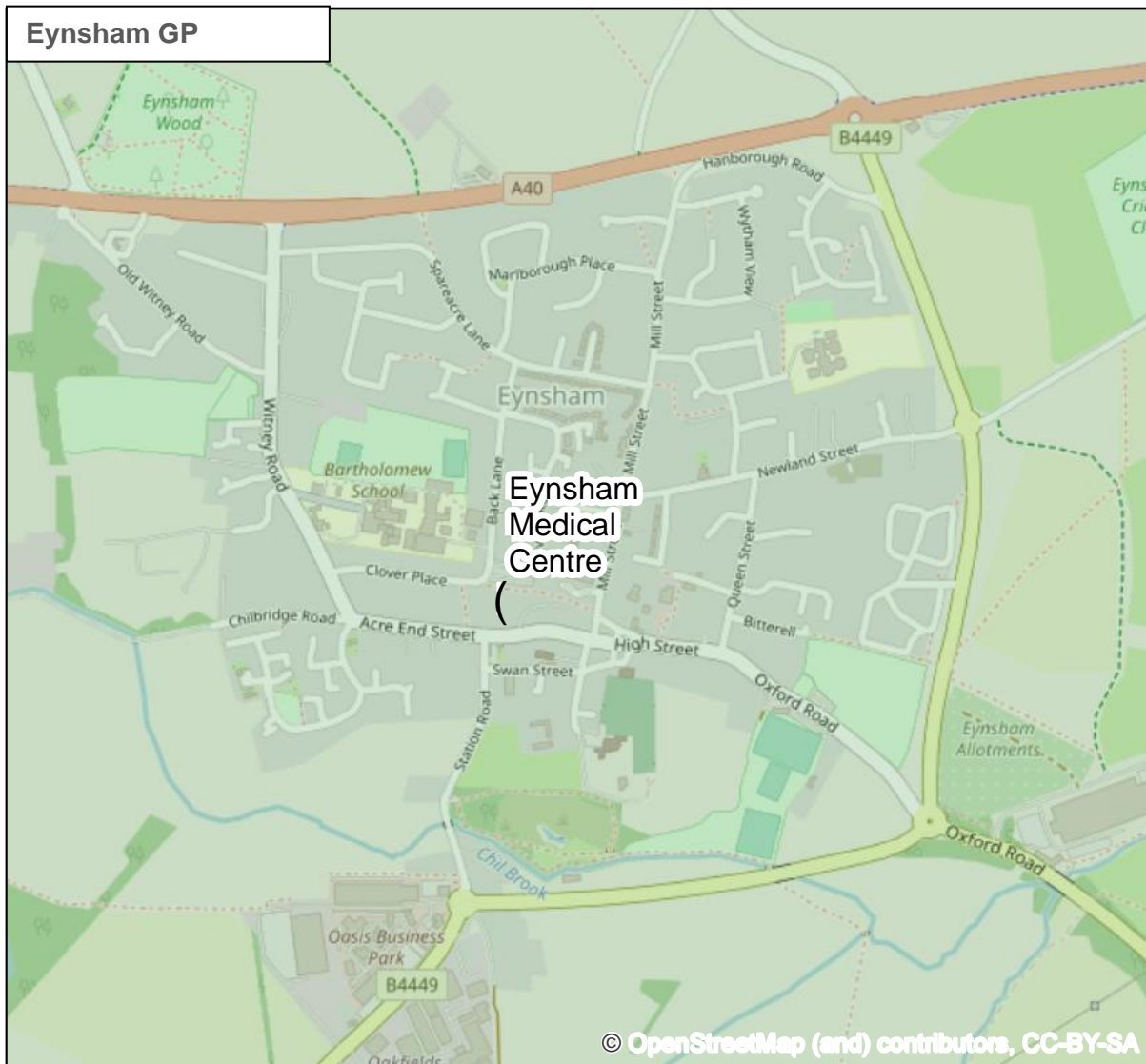
In Eynsham: MSOA West Oxfordshire 011 has 3 LSOAs (11A-C); MSOA West Oxfordshire 006 includes LSOA 006A.

Each LSOA is made up of smaller Output Areas. The main datasets available at Output Area level is the Census 2011 and Census 2001 surveys.



Maps by Oxfordshire County Council

**GP data** on prevalence of health conditions has been extracted from the Quality Outcomes Framework (to the end of March 2020) for **Eynsham Medical Centre**.



Maps by Oxfordshire County Council

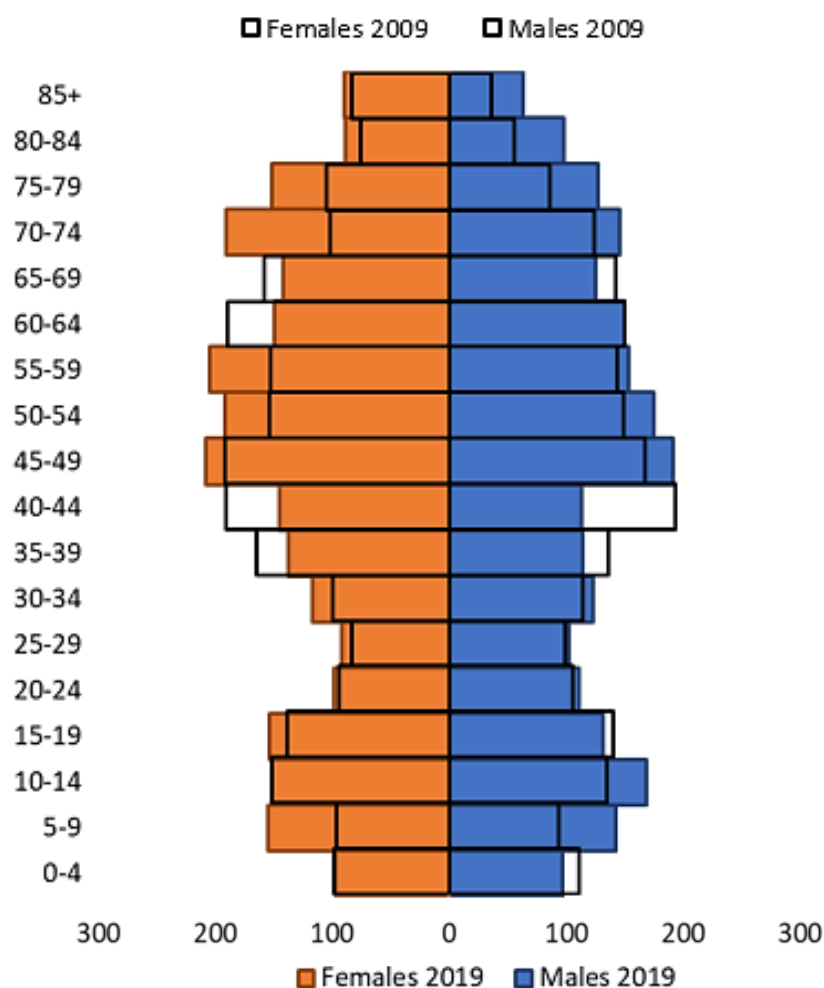


### 3 Population profile

#### 3.1 Population by age

According to the ONS mid-2019 parish population estimates, the population of Eynsham increased from **4,616** in mid-2009 to **5,042** in mid-2019. This growth - over a ten-year period – was an apparent increase of +8%.

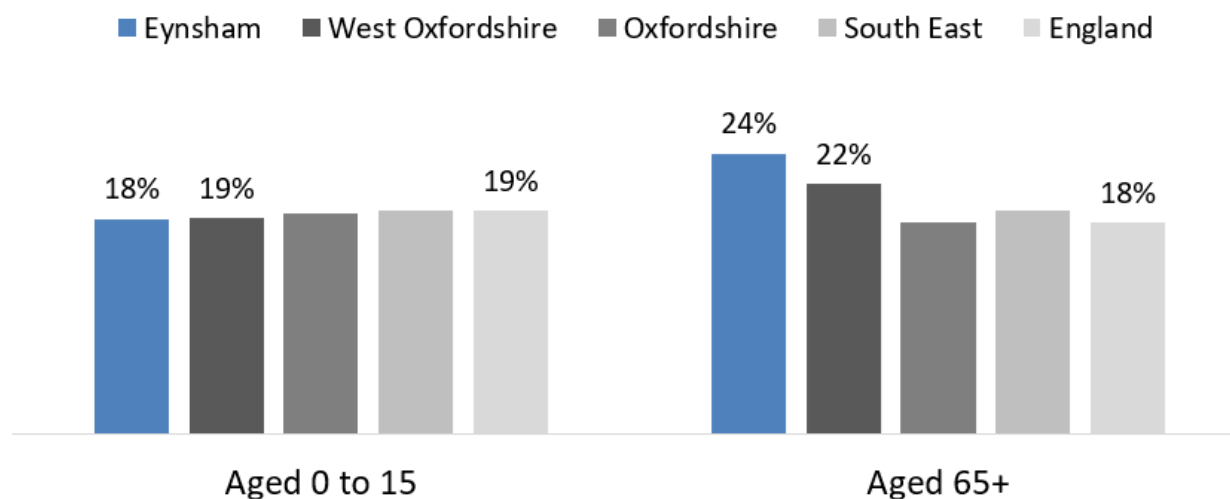
Figure 1 Population of Eynsham by 5-year age band 2009 and 2019



Source: ONS parish level mid-2019 population estimates from [Nomis](#)

Comparing Eynsham's age profile in 2019 with the district, county, regional and national averages, shows a slightly lower proportion in the younger age group (0-15) and a higher proportion of over people aged 65 and over.

**Figure 2 Proportion of residents aged 0-15 and 65+ (2019)**



Source: ONS mid-year population estimates

## 3.2 Ethnicity

*The most recent data on the ethnic background of the resident population of an area is still the 2011 Census.*

A relatively low proportion of Eynsham's population is from an ethnic minority background.

- As of 2011, 7.8% of Eynsham's population was from an ethnic minority background<sup>2</sup>.
- This was similar to West Oxfordshire district (7%) and less than half of the proportion of ethnic minority residents in Oxfordshire as a whole (16%).

The largest ethnic minority group in Eynsham was "White Other" with 155 residents, followed by "Other Asian" with 27 residents. These two groups accounted for half (50%) of Eynsham's ethnic minority population.

Country of birth data<sup>3</sup> shows that the largest groups of non-UK born residents in Eynsham were from:

- Germany (34 residents)
- United States (34 residents)
- South Africa (30 residents)
- Ireland (26 residents)
- Australia (21 residents)

<sup>2</sup> ONS Census 2011 table KS201

<sup>3</sup> ONS Census 2011 table QS203

### 3.3 People living in Communal Establishments

*The most recent data on people living in communal establishments (such as care homes, boarding schools, halls of residence) is still the 2011 Census.*

The majority of the population of Eynsham are living in households rather than communal establishments.

At the time of the Census 2011 survey, there were 19 people living in Eynsham counted as living in a communal establishment out of a total of 5,042 residents.

These 19 residents were living in a care home with nursing.

**Table 1 People living in Communal Establishments: Eynsham and surrounding parishes (2011)**

Area	All categories of Communal establishment	Care home with nursing	Care home without nursing
West Oxfordshire	2,364	428	450
Eynsham	19	19	-
Cassington	27	16	11
Freeland	73	63	-
Hanborough	-	-	-
North Leigh	17	-	-
South Leigh	-	-	-
Stanton Harcourt	-	-	-

Source: ONS Census 2011 table QS421

## 4 Deprivation and Children in poverty

### 4.1 Indices of Deprivation 2019

#### Indices of Deprivation 2019

The 2019 Indices of Deprivation (IMD2019) combines indicators across 7 “domains” and includes supplementary indices of income deprivation affecting children and older people.

According to this latest IMD, one area of Eynsham ranks within the most deprived 50% nationally on the overall index.

On the barriers to housing and services domain (including geographical barriers – distance to selected services - and access to housing/affordability), one area of Eynsham is in the 10% most deprived nationally.

**Figure 3 IMD ranks for areas in Eynsham (1 is most deprived decile) sorted on the overall IMD**

Area name	IMD	Income	Emp	Education	Health	Crime	Barriers to Housing and Services	Living Environment	Income Depr Affecting Children	Income Depr Affecting Older People
Eynsham and Cassington 06A	9	8	8	10	9	9	5	8	7	9
Eynsham and Cassington 11A	9	8	9	5	8	10	10	8	8	8
Eynsham and Cassington 11B	10	10	10	8	10	10	9	9	10	10
Eynsham and Cassington 11C	5	4	4	3	6	9	1	9	4	4

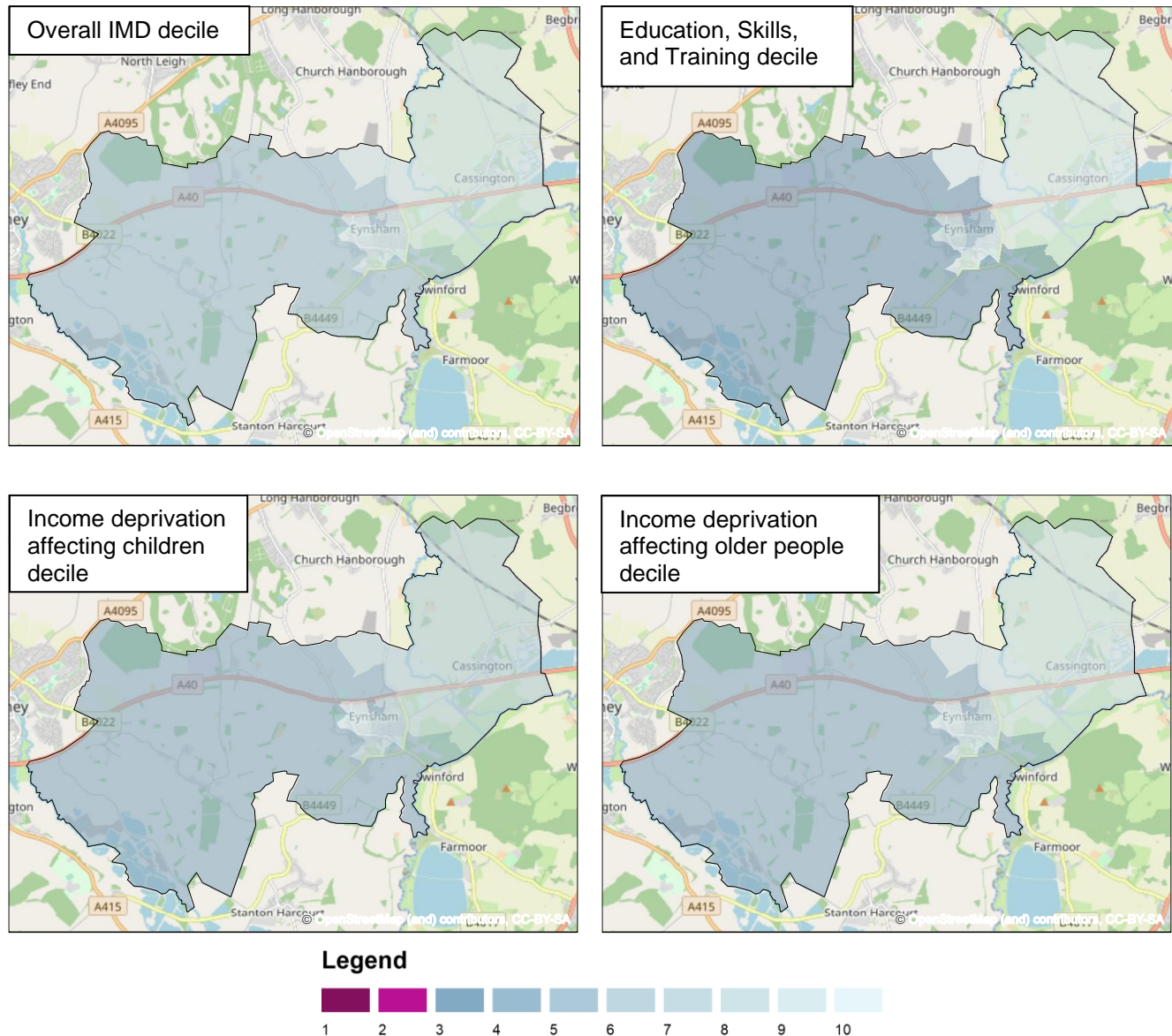
Source: MHCLG English Indices of Deprivation 2019

Numbers = deprivation decile (compared with all areas in England) where 1 = most deprived 10% nationally and 10= least deprived 10% nationally.

The following maps show the rank of areas across Eynsham on the overall index, the education, skills and training domain and the two supplementary indices of income deprivation affecting children and income deprivation affecting older people.

- On the *education, skills and training* domain there is one area of Eynsham in the most deprived 30% nationally.
- On *income deprivation affecting children* and *income deprivation affecting older people*, an area in Eynsham is in the 40% most deprived.

**Figure 4 Eynsham showing rank of overall index, rank of Education Skills and Training domain, rank of Income deprivation affecting children and rank of Income deprivation affecting older people (2019)**



Maps by Oxfordshire County Council © Crown Copyright and database rights 2020 100023343

Source: MHCLG IMD 2019, <https://www.gov.uk/government/statistics/english-indices-of-deprivation-2019>

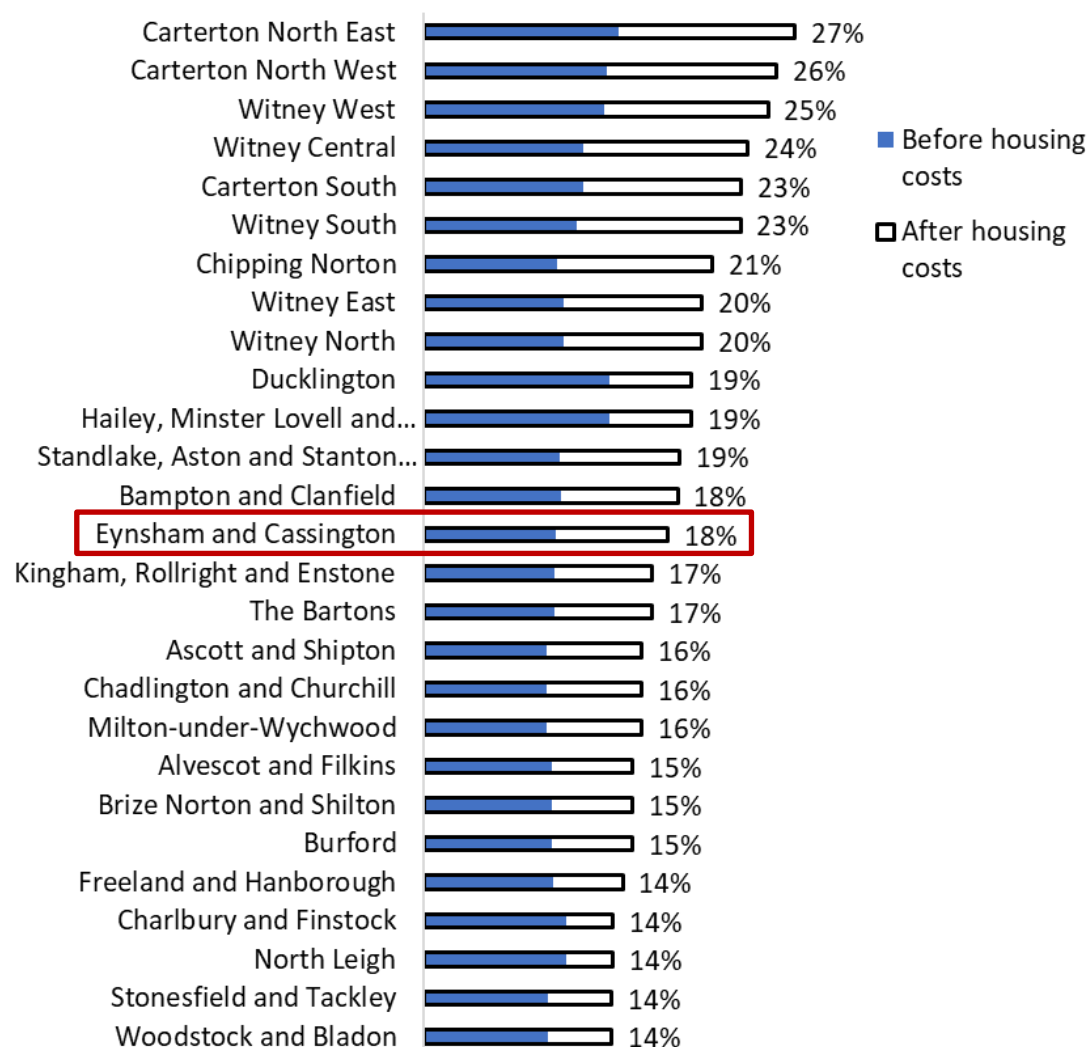


## 4.2 Child poverty

The underlying data from the Income Deprivation Affecting Children Index 2019 (data as of August 2015) shows 245 children living in poverty in Eynsham.

According to End Child Poverty 2017/2018 estimates, Eynsham and Cassington ward had 18% of children living in poverty (after housing costs).

**Figure 5 Child poverty estimates West Oxfordshire wards (2017/2018 estimates)**



Source: End Child Poverty estimates, <http://www.endchildpoverty.org.uk/poverty-in-your-area-2019/>

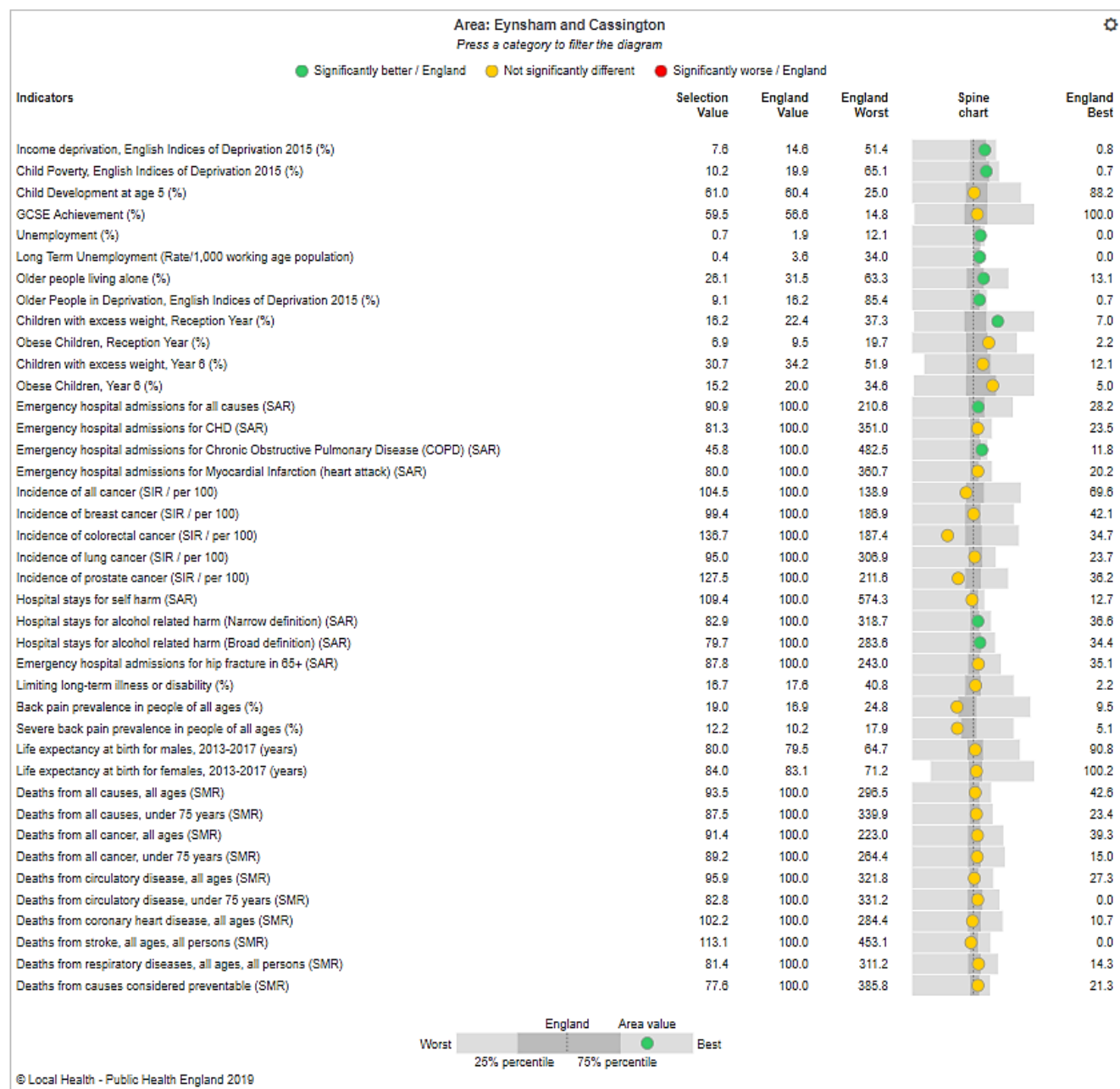
## 5 Health and wellbeing

### 5.1 Health profiles for Eynsham & Cassington ward

Public Health England publishes a range of health indicators to a local level at [www.localhealth.org.uk](http://www.localhealth.org.uk)

For all the health indicators, Eynsham and Cassington ward was either not significantly different or significantly better than England.

Figure 6 Health Profile for Eynsham and Cassington



## 5.2 Provision of care

### Care home beds

As of November 2020<sup>4</sup>, there was one care home with 61 care home beds in Eynsham.

### People providing unpaid care

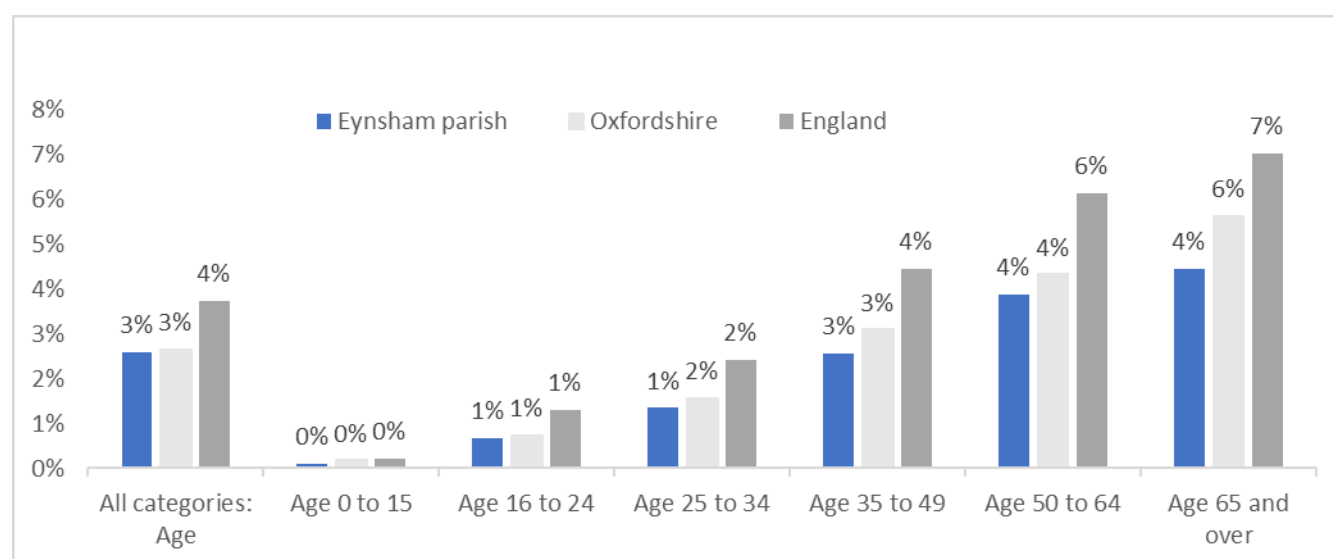
*The most recent data on people providing unpaid care is still the 2011 Census.*

At the time of the Census 2011 survey, there was 131 residents of Eynsham parish providing a significant number of hours per week (20 or more) of unpaid care.

Overall, the proportion of people providing 20 or more hours per week of unpaid care in Eynsham in 2011 was similar to the county average and below national average.

The proportion of residents providing care in Eynsham parish in the age group 65 and over was well below the county and national averages.

**Figure 7 People providing 20 hours or more per week of unpaid care by age as % of resident population (2011)**



Source: ONS Census 2011 table LC3304

<sup>4</sup> [Care Quality Commission care directory](#)

## 5.3 Health conditions

### Diabetes

Between 2018-19 and 2019-20 the prevalence of diabetes mellitus recorded by Eynsham Medical Centre according to GP Quality Outcomes Framework data (QOF) increased. In 2019-20, the prevalence of diabetes recorded by Eynsham Medical Centre was significantly lower than the England rate.

**Table 2 Change in prevalence (ages 17+) of Diabetes mellitus recorded by GP Practice (Quality Outcomes Framework) in Eynsham 2018-19 to 2019-20**

	2018-19		2019-20		change
	Count	Rate	Count	Rate	
England	3,265,562	6.94	3,455,176	7.08	0.14 ↑
Oxfordshire CCG	30,868	5.05	31,982	5.05	<0.01 ↑
Eynsham Medical Centre	687	5.94	697	5.95 *	+0.1 ↑

Source: [NHS Digital, Quality Outcomes Framework](#) published Aug 2020

2019-20 rates with a red asterisk indicate a significantly higher rate for a GP practice compared to the national rate. Green asterisks indicate a significantly lower rate. Tested at a 99.8% confidence level.

### Mental health

The prevalence of **dementia** recorded by Eynsham Medical Centre increased between 2018-19 and 2019-20 was double the Oxfordshire CCG and nearly double England averages.

**Table 3 Change in prevalence of Dementia recorded by GP Practice (Quality Outcomes Framework) in Eynsham 2018-19 to 2019-20**

	2018-19		2019-20		change
	Count	Rate	Count	Rate	
England	458,102	0.79	474,537	0.79	<0.01 ↑
Oxfordshire CCG	5,831	0.78	5,821	0.75	-0.03 ↓
Eynsham Medical Centre	206	1.46	214	1.50 *	0.04 ↑

Source: [NHS Digital, Quality Outcomes Framework](#) published Aug 2020

2019-20 rates with a red asterisk indicate a significantly higher rate for a GP practice compared to the national rate. Green asterisks indicate a significantly lower rate. Tested at a 99.8% confidence level.

Although the prevalence of **depression** recorded by Eynsham Medical Centre has increased, as of 2019-20, it remains below the Oxfordshire CCG and England averages.

**Table 4 Change in prevalence of Depression recorded by GP Practice (Quality Outcomes Framework) in Eynsham 2018-19 to 2019-20**

	2018-19		2019-20		change
	Count	Rate	Count	Rate	
England	4,999,672	10.77	5,565,443	11.56	+0.79↑
Oxfordshire CCG	66,656	11.06	73,648	11.81	+0.74↑
Eynsham Medical Centre	850	7.46	1,043	9.03*	1.57 ↑

Source: [NHS Digital, Quality Outcomes Framework](#) published Aug 2020

2019-20 rates with a red asterisk indicate a significantly higher rate for a GP practice compared to the national rate. Green asterisks indicate a significantly lower rate. Tested at a 99.8% confidence level.

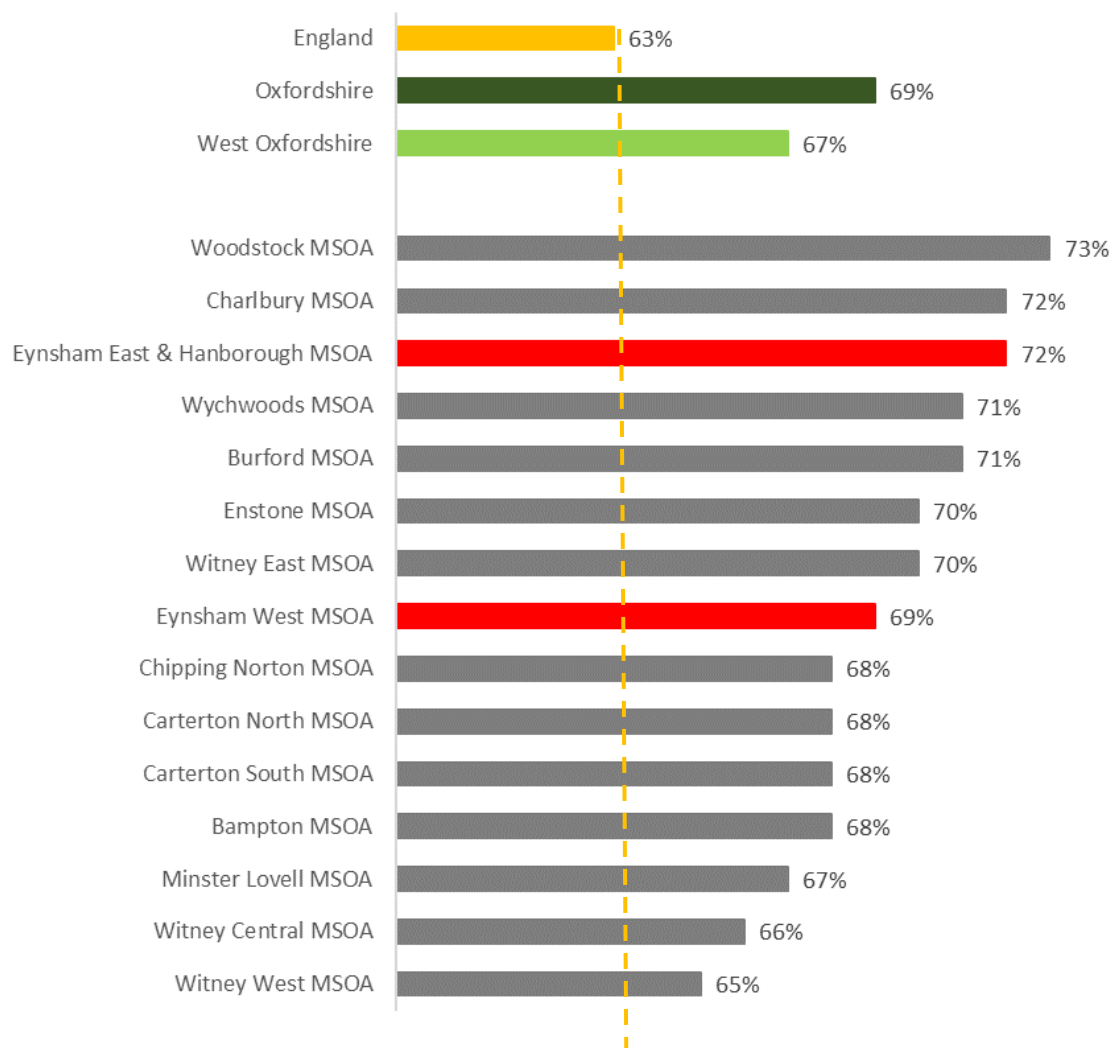


## 6 Physical activity and healthy weight

### 6.1 Physical activity

According to Sport England's small area estimates<sup>5</sup>, the proportion of people aged 16+ in Eynsham East MSOA (with Hanborough & Cassington) and Eynsham West MSOA, who were physically active at least 150 minutes a week, were each higher than the England average.

**Figure 8 Proportion of adults aged 16+ who are physically active at least 150 minutes a week (November 2017-18), West Oxfordshire MSOAs**



Note that for Oxfordshire's local authorities including West Oxfordshire, the Active Lives survey is completed by 500 respondents, which is 20-30 people per MSOA. This is too few to derive precise direct estimates.

This small area (MSOA) level data is modelled data on the basis of a range of local variables

Source: Sport England Active Lives survey, November 2017-18; MSOA = Middle Layer Super Output Area covering an average of 7,600 residents; [map showing MSOAs in Oxfordshire](https://www.sportengland.org/our-work/partnering-local-government/small-area-estimates/)

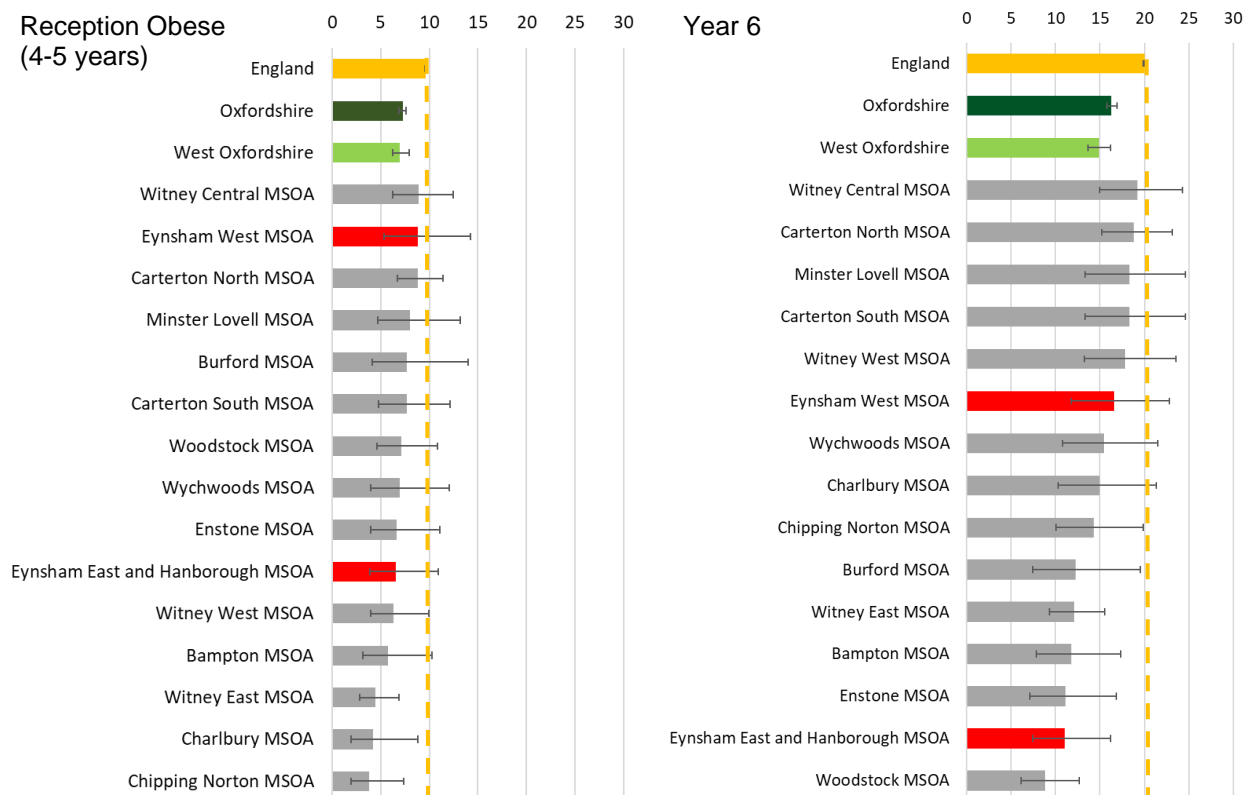
<sup>5</sup> <https://www.sportengland.org/our-work/partnering-local-government/small-area-estimates/>

## 6.2 Child obesity

The latest data on child obesity from the National Child Measurement Programme shows that:

- for reception children (aged 4-5 years), the Eynsham area was similar to the district, county and national averages.
- for year 6 children (aged 10-11 years) the area including east Eynsham and Hanborough was significantly below (better than) the national average.

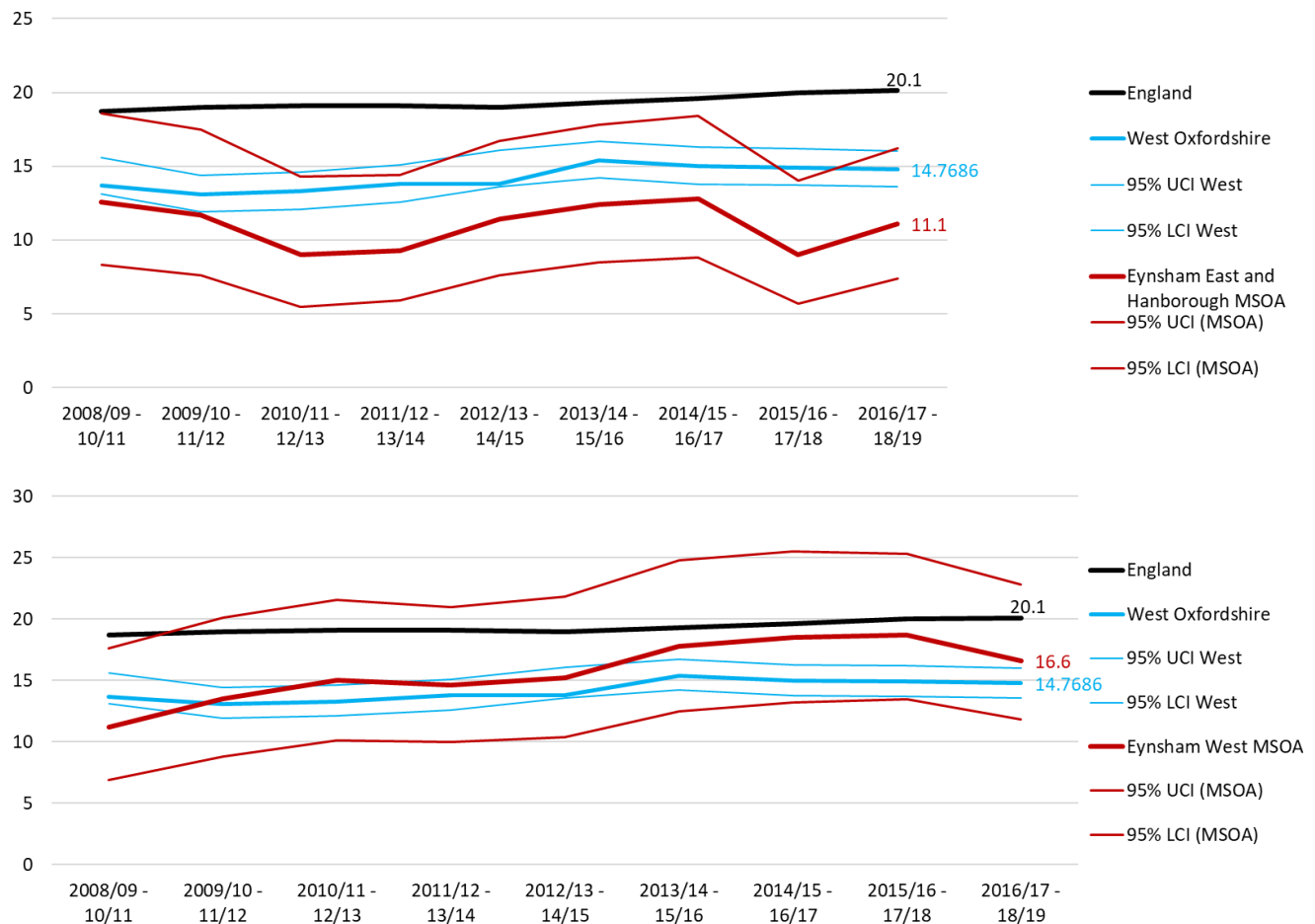
**Figure 98 Prevalence of obesity among children 2017/18 to 2018/19 (showing confidence intervals)**



Source: [National Child Measurement Programme](#)

Year 6 obesity trend data for Eynsham East & Hanborough and Eynsham West MSOAs shows that both have remained at a similar level (see following charts).

**Figure 10 Prevalence of obesity among Year 6 children (aged 10-11) in Eynsham MSOAs compared to West Oxfordshire and England, from 2008/09-2010/11 to 2016/17-2018/19 (3 years aggregated data)**



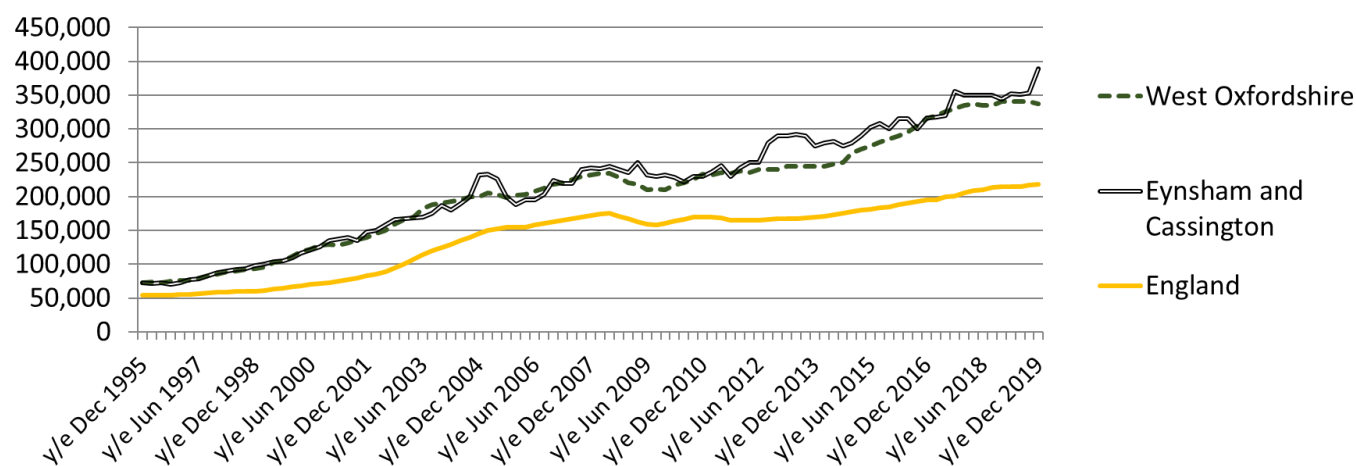
Source: [National Child Measurement Programme](#); This data is estimated from suppressed MSOA data

## 7 House prices and commuting data

Median house prices are very dependent on the mix of housing sold (detached, semi-detached, terraced, flats). Looking at individual housing types gives a more comparable trend.

Over the past 5 years (year ending December 2014 to year ending December 2019), median prices for semi-detached houses in Eynsham and Cassington ward increased at well above the rate of West Oxfordshire district (+39% compared with +28%).

**Figure 119 Median price paid for semi-detached houses to year ending December 2019 – Eynsham and Cassington ward**



Source: [ONS House price statistics for small areas to year ending December 2019](#); quarterly rolling year dataset 37

**Table 5 Median price paid for semi-detached houses, Q4 2014 to Q4 2019**

	y/e December 2014	y/e December 2019	Dec14 to Dec19	
Eynsham and Cassington	279,500	389,000	109,500	39%
West Oxfordshire	264,000	337,500	73,500	28%
England	177,950	218,000	40,050	23%

Source: [ONS House price statistics for small areas to year ending December 2019](#); quarterly rolling year dataset 37

### Travelling to work

According to the 2011 Census, 19% of Eynsham's commuters<sup>6</sup> travelled to work within the town. The top other work destination was Oxford followed by Witney.

- As of the 2011 Census 4,584 people in employment and living within Eynsham travelled to get to work. 850 of these travelled to other parts of Eynsham (19%) and 22% travelled to elsewhere within West Oxfordshire district.
- The most common other single destinations were Oxford (1,337, 29%) and Witney (573, 13%). Around 109 people commuted to London.

The most common mode of travel was the car or van (70%), followed by buses (9%), walking (6%), and cycling (6%).

---

<sup>6</sup> Source: ONS Census 2011, table WU03EW; data for MSOAs West Oxfordshire 006 and West Oxfordshire 011



## ANNEX 1: Indicator dates

**Table 6 Indicators used in ward profiles from Public Health England Local Health (section 6.1)**

Income deprivation - English Indices of Deprivation 2015 (%)	IMD 2015
Child Poverty - English Indices of Deprivation 2015 (%)	
Child Development at age 5 (%)	DfE 2015
GCSE Achievement (5A*-C inc. Eng. & Maths) (%)	DfE 2013/14
Unemployment (%)	DWP from Nomis 2017/18
Long Term Unemployment (Rate/1,000 working age population)	
Older people living alone (%)	ONS Census 2011
Older People in Deprivation - English Indices of Deprivation 2019 (%)	IMD 2019
Children with excess weight, Reception Year (%)	NCMP 2015/16 to 2017/18
Obese Children, Reception Year (%)	
Children with excess weight, Year 6 (%)	
Obese Children, Year 6 (%)	
Emergency hospital admissions for all causes (SAR)	Hospital Episode Statistics, NHS Digital 2013/14 to 2017/18
Emergency hospital admissions for CHD (SAR)	
Emergency hospital admissions for stroke (SAR)	
Emergency hospital admissions for Myocardial Infarction (heart attack) (SAR)	
Emergency hospital admissions for Chronic Obstructive Pulmonary Disease (COPD) (SAR)	
Incidence of all cancer (SIR / per 100)	National Cancer Registration and Analysis Services' Cancer Analysis System 2012 to 2016
Incidence of breast cancer (SIR / per 100)	
Incidence of colorectal cancer (SIR / per 100)	
Incidence of lung cancer (SIR / per 100)	
Incidence of prostate cancer (SIR / per 100)	
Hospital stays for self-harm (SAR)	Hospital Episode Statistics, NHS Digital 2013/14 to 2017/18
Hospital stays for alcohol related harm (Narrow definition) (SAR)	
Hospital stays for alcohol related harm (Broad definition) (SAR)	
Emergency hospital admissions for hip fracture in 65+ (SAR)	
Limiting long-term illness or disability (%)	ONS Census 2011
Back pain prevalence in people of all ages (%)	Musculoskeletal (MSK) Calculator by Imperial College London for Arthritis Research UK based
Severe back pain prevalence in people of all ages (%)	

	on data from the Health Survey for England (HSE) 2012
Life expectancy at birth for males, 2013-2017 (years)	Public Health England from ONS 2013-2017
Life expectancy at birth for females, 2013-2017 (years)	
Deaths from all causes, all ages (SMR)	
Deaths from all causes, under 75 years (SMR)	
Deaths from all cancer, all ages (SMR)	
Deaths from all cancer, under 75 years (SMR)	
Deaths from circulatory disease, all ages (SMR)	
Deaths from circulatory disease, under 75 years (SMR)	
Deaths from coronary heart disease, all ages (SMR)	
Deaths from stroke, all ages, all persons (SMR)	
Deaths from respiratory diseases, all ages, all persons (SMR)	
Deaths from causes considered preventable (SMR)	

## ANNEX 2: Data sources used in this report

Data sources used in this report (links last accessed September 2020)

Data	Source
Administrative boundaries	<a href="https://geoportal.statistics.gov.uk/">https://geoportal.statistics.gov.uk/</a>
Locations of GP practices	Oxfordshire County Council
ONS mid-year population estimates	<a href="https://www.nomisweb.co.uk/">https://www.nomisweb.co.uk/</a> (‘Small area by single year of age’ query)
2011 Census: ethnicity	<a href="https://www.nomisweb.co.uk/">https://www.nomisweb.co.uk/</a> (Census 2011 ‘KS201EW’ query)
2011 Census: country of birth	<a href="https://www.nomisweb.co.uk/">https://www.nomisweb.co.uk/</a> (Census 2011 ‘QS203EW’ query)
2011 Census: people living in communal establishments	<a href="https://www.nomisweb.co.uk/">https://www.nomisweb.co.uk/</a> (Census 2011 ‘QS421UK’ query)
2019 Indices of Multiple Deprivation - scores	<a href="https://www.gov.uk/government/statistics/english-indices-of-deprivation-2019">https://www.gov.uk/government/statistics/english-indices-of-deprivation-2019</a> (File 1: index of multiple deprivation)
2019 Indices of Multiple Deprivation - maps	<a href="https://data-communities.opendata.arcgis.com/">https://data-communities.opendata.arcgis.com/</a> (Indices of Multiple Deprivation (IMD) 2019 dataset)
2017/18 Child Poverty Estimates	<a href="http://www.endchildpoverty.org.uk/poverty-in-your-area-2019/">http://www.endchildpoverty.org.uk/poverty-in-your-area-2019/</a> (‘Local Data’)
2019 PHE Health Indicators	<a href="https://www.localhealth.org.uk/">https://www.localhealth.org.uk/</a> (Indicators > Summary)
2020 numbers of care homes and beds	<a href="https://www.cqc.org.uk/about-us/transparency/using-cqc-data">https://www.cqc.org.uk/about-us/transparency/using-cqc-data</a> (‘Care directory with filters)
2011 Census: people providing unpaid care	<a href="https://www.nomisweb.co.uk/">https://www.nomisweb.co.uk/</a> (Census 2011 ‘LC3304EW’ query)
2019/20 Prevalence of diabetes	<a href="https://digital.nhs.uk/data-and-information/publications/statistical/quality-and-outcomes-framework-achievement-prevalence-and-exceptions-data">https://digital.nhs.uk/data-and-information/publications/statistical/quality-and-outcomes-framework-achievement-prevalence-and-exceptions-data</a> (Prevalence, achievement and personalised care adjustments; High dependency and other long-term conditions group; GP practice level)
2019/20 Prevalence of dementia and depression	<a href="https://digital.nhs.uk/data-and-information/publications/statistical/quality-and-outcomes-framework-achievement-prevalence-and-exceptions-data">https://digital.nhs.uk/data-and-information/publications/statistical/quality-and-outcomes-framework-achievement-prevalence-and-exceptions-data</a>

	(Prevalence, achievement and personalised care adjustments; mental health and neurology group; GP practice level)
2018/19 Sport England physical activity estimates	<a href="https://www.sportengland.org/know-your-audience/data/active-lives/active-lives-data-tables">https://www.sportengland.org/know-your-audience/data/active-lives/active-lives-data-tables</a> (Small Area Estimates – Activity Levels Estimates for Middle Super Output Areas)
Child obesity	<a href="https://www.gov.uk/government/statistics/child-obesity-and-excess-weight-small-area-level-data">https://www.gov.uk/government/statistics/child-obesity-and-excess-weight-small-area-level-data</a> (Small area NCMP data: MSOA)
House price statistics	<a href="https://www.ons.gov.uk/peoplepopulationandcommunity/housing/bulletins/housepricestatisticsforsmallareas/yearendingdecember2019">https://www.ons.gov.uk/peoplepopulationandcommunity/housing/bulletins/housepricestatisticsforsmallareas/yearendingdecember2019</a> (Median house prices by ward: HPSSA dataset 37)
2011 Census: Travelling to work	<a href="https://www.nomisweb.co.uk/">https://www.nomisweb.co.uk/</a> (Census 2011 'QS701EW' query)

For data and statistics on Oxfordshire and place profiles please visit [Oxfordshire Insight](#)